

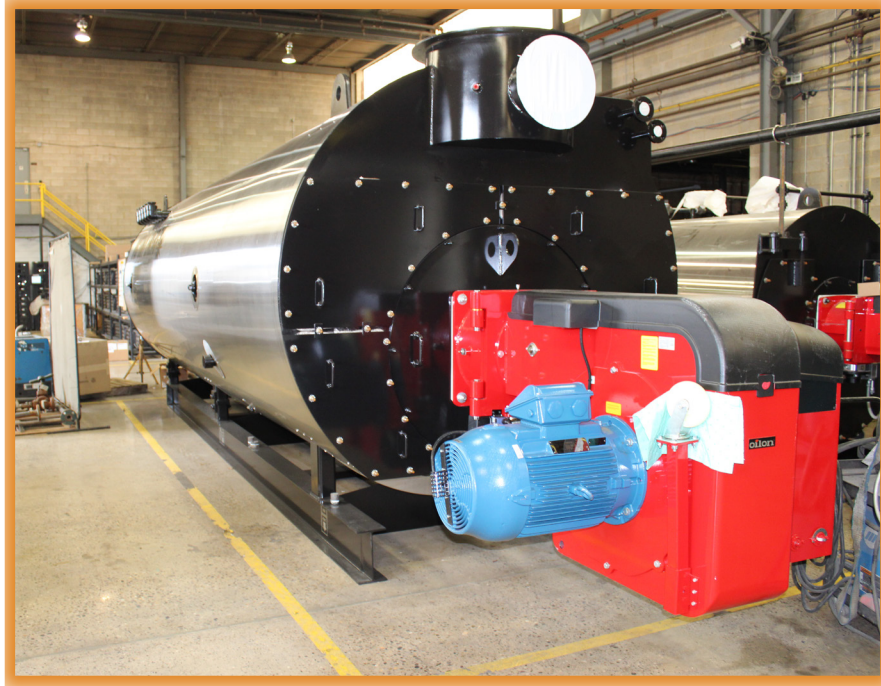


POWERHOUSE

BOILER SPECIFICATION SHEET

POWERHOUSE.COM

800.37.STEAM



B-1293

2019 F2-DB-650-250



GENERAL DESIGN

STANDARDS & CERTIFICATIONS



ASME Section I



National Board
Registered



NFPA-85 Build
Standard



Hartford Steam
Boiler Inspected

MANUFACTURER (OEM)	Victory Energy
YEAR	2019
SERIAL NO.	15272-1
NATIONAL BOARD NO.	769
CRN NO.	-
MODEL	F2-DB-650-250
ASME CODE SECTION	Section I
TYPE	Scotch
DESIGN	Two-Pass Dryback Firetube
MOUNTING	Saddles & Skid-Mounted
INTERNAL	Corrugated Furnace & Straight Rifled Tubes



CAPACITIES & INPUTS

OUTPUT SERVICE	HPS & HHW
OUTPUT CAPACITY	22,425 LB/HR - HPS 2,100 GPM @ 20° ΔT - HHW
HORSEPOWER	650 BHP
DESIGN PRESSURE (MAWP)	250 PSIG
OPERATING RANGE	80 - 225 PSIG
HEATING SURFACE	1,877 ft ²
MAX. FUEL INPUT	NG: 27,330,000 BTU/HR #2: 187 GAL/HR
STANDARD FUELS ¹	Natural Gas & #2 Fuel Oil
ADDITIONAL FUELS ²	
INPUT GAS PRESSURE	MAX: 7.2 PSIG MIN: 3.0 PSIG
TURNDOWN RATIOS	NG: 6:1 #2: 4:1
EMISSION RATING (NOX)	NG: 30 PPM #2: 90 PPM

¹ Standard Fuels: Boiler comes ready to burn these fuels including fuel train, safety devices, integral wiring and delivery systems.

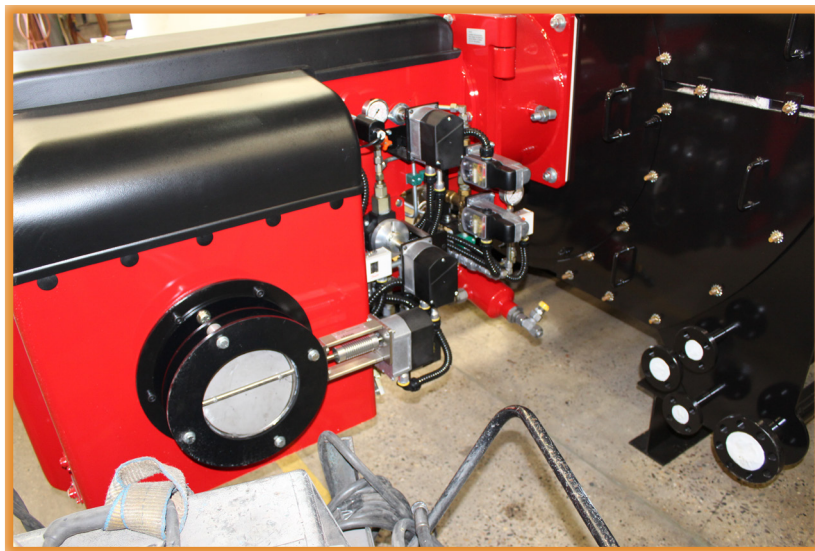
² Additional Fuels: Boiler is capable of running on these fuels but requires modifications to the burner, fuel delivery systems and wiring, at additional cost.





BURNER AND ELECTRICAL

BURNER MANUFACTURER (OEM)	Oilon
MODEL	GKP-700M-II WD200
TYPE	Full Modulation
FLUE GAS RECIRCULATION (FGR)	Yes
ELECTRIC	480V/3Ph/60Hz
ATOMIZATION	Pressure
CONTROL TYPE	Parallel Positioning
BOILER CONTROL SYSTEM	Oilon WiseDrive
BURNER MANAGAMENT SYSTEM	Siemens LMV 51
FLAME SAFEGUARD	IR Scanner
BLOW MOTOR	30 HP
BURNER INSTALLED	Yes
PILOT TYPE	Propane (LPG), NG, Spark
INSTRUMENT AIR	-
AIR COMPRESSOR	-





DIMENSIONS AND WEIGHTS

OVERALL LENGTH	28' 1"
OVERALL HEIGHT	8' 4"
OVERALL WIDTH	7' 10"
SHIPPING WEIGHT	41,000 LBS
OPERATING WEIGHT	66,300 LBS
BOILER OUTLET	8" \varnothing 300# STUDDERY FLG. - HPS 12" \varnothing 300# STUDDERY FLG. - HHW
BOILER RETURN	(2) 8" \varnothing 300# RF FLG. - HHW
EXHAUST OUTLET	24" \varnothing ID



800.37.STEAM

POWERHOUSE.COM

HQ

240 CREEK RD. DELANCO, NJ 08075 USA

+1 (856) 764-3333

SOUTHEAST OPERATIONS

1710 PACOLET CT., GASTONIA, NC 28052 USA

+1 (704) 864-7707

POWERHOUSE DOES NOT MAKE ANY REPRESENTATIONS, WARRANTIES OR GUARANTEES, EXPRESS OR IMPLIED WITH THIS BOILER SPECIFICATION SHEET. THE CONTAINED INFORMATION IS PROPRIETARY TO POWERHOUSE AND NO OWNERSHIP RIGHTS ARE HEREBY TRANSFERRED. NO PART OF THE SHEET SHALL BE USED, REPRODUCED, TRANSLATED, CONVERTED, ADAPTED, STORED IN A RETRIEVAL SYSTEM, COMMUNICATED OR TRANSMITTED BY ANY MEANS, FOR ANY COMMERCIAL PURPOSE, INCLUDING WITHOUT LIMITATION, SALE, RESALE, LICENSE, RENTAL OR LEASE, WITHOUT THE PRIOR EXPRESS WRITTEN CONSENT OF POWERHOUSE. NEITHER POWERHOUSE NOR ANY OF ITS DIRECTORS, OFFICERS, EMPLOYEES OR AGENTS SHALL BE LIABLE BASED ON CONTRACT, WARRANTY, STRICT LIABILITY OR NEGLIGENCE, PATENT INFRINGEMENT, TORT OR IN ANY OTHER MANNER WHATSOEVER TO ANY PERSON FOR ANY LOSS, DAMAGE, INJURY, LIABILITY, COST OR EXPENSE OF ANY NATURE, INCLUDING WITHOUT LIMITATION INCIDENTAL, SPECIAL, INDIRECT, DIRECT, LIQUIDATED, EXEMPLARY, PUNITIVE OR CONSEQUENTIAL DAMAGES ARISING OUT OF OR IN CONNECTION WITH THE USE OF THE SPECIFICATION SHEET.

PLEASE CONTACT POWERHOUSE AT 856-764-3333 OR 1-800-37-STEAM FOR ENGINEERED DRAWINGS AND COMPLETE O&M MANUALS.

